

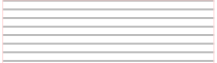
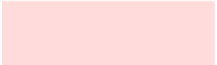
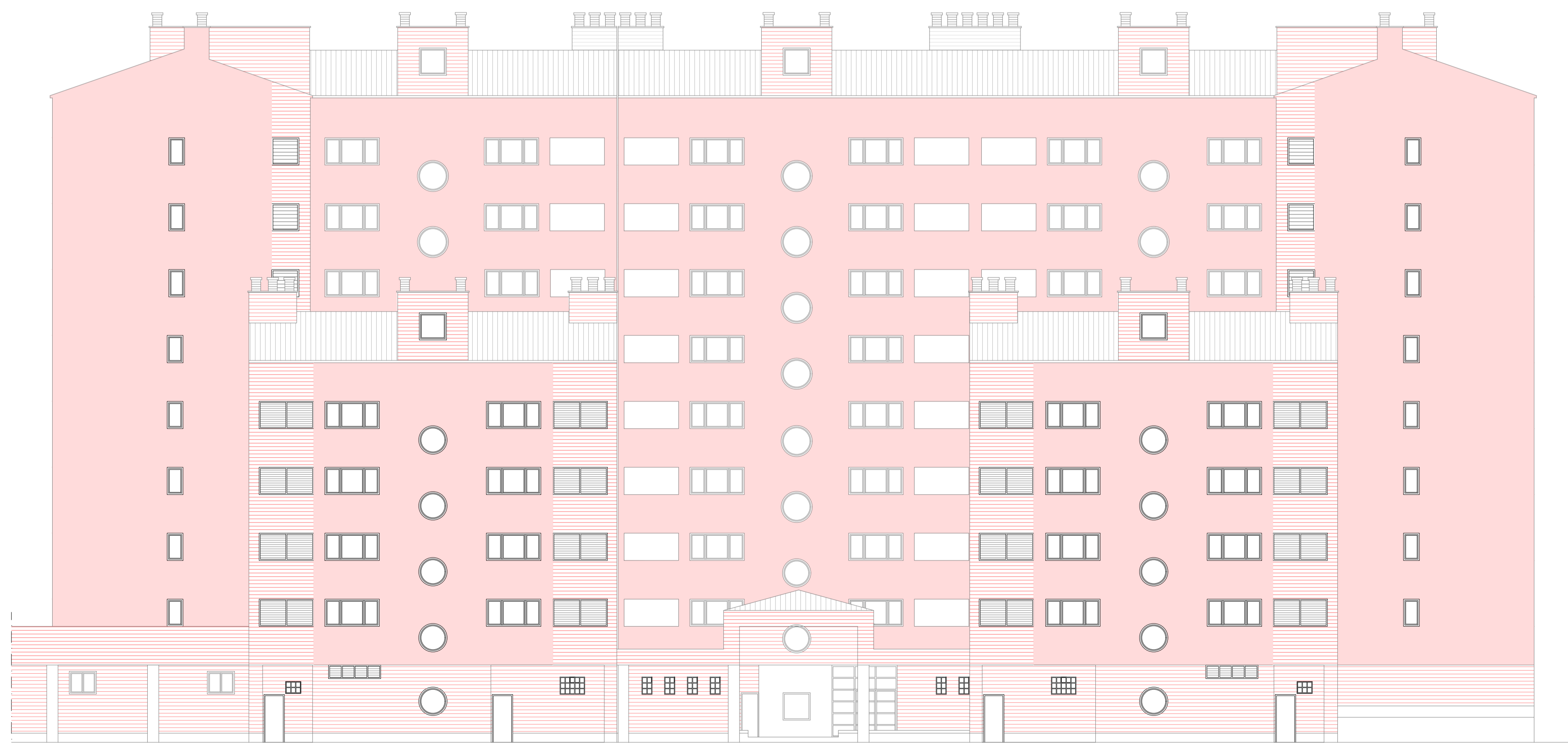


ALZADO SURESTE, ESTADO ACTUAL

-  FABRICA LADRILLO CARAVISTA EXISTENTE
-  LAMAS DE ALUMINIO EXISTENTES
-  LAMAS FIJAS DE ALUMINIO MICROPERFORADO GRADHERMETIC PH-84-16
-  SATE 12 cm. LANA DE ROCA



ALZADO SURESTE, PROPUESTA TÉCNICA MEJORA ENVOLVENTE

