






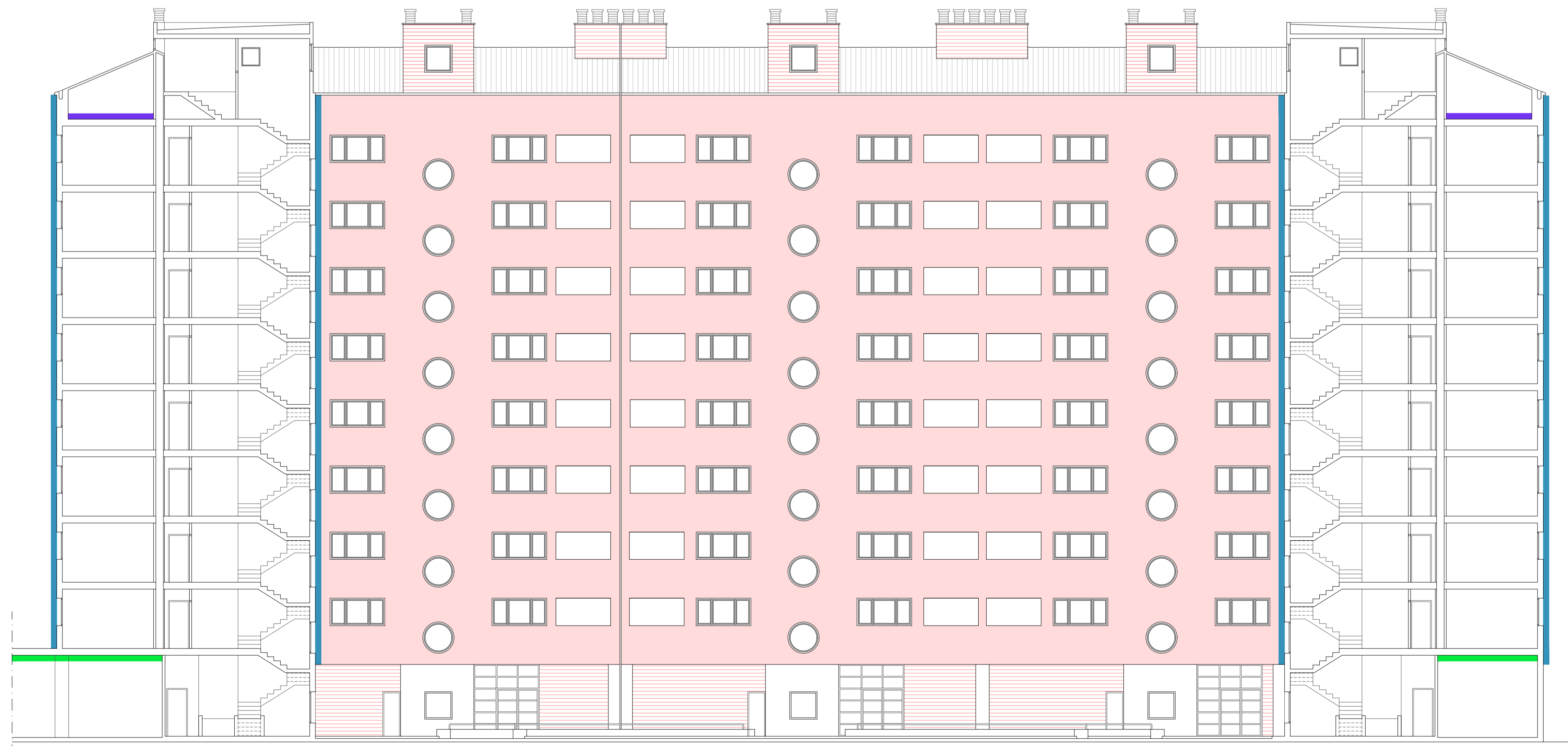




SECCIÓN A-A, ESTADO ACTUAL

-  FABRICA LADRILLO CARAVISTA EXISTENTE
-  LAMAS DE ALUMINIO EXISTENTES
-  LAMAS FIJAS DE ALUMINIO MICROPERFORADO GRADHERMETIC PH-84-16
-  SATE 12 cm. LANA DE ROCA
-  LANA DE ROCA 30cm DE BORRA SOPLADA
-  LANA DE ROCA 12cm
-  SATE 12 cm. LANA DE ROCA



SECCIÓN A-A, PROPUESTA TÉCNICA MEJORA ENVOLVENTE

